

## The Northeast Area of the Christian Church (Disciples of Christ) of Mid-America

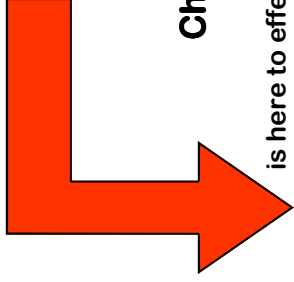
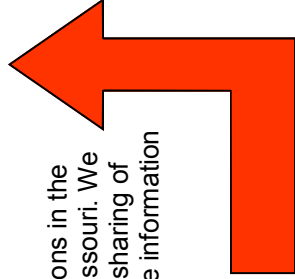
is here to effectively reach and serve you, our congregations,  
so you can effectively  
reach and serve your communities.

### The NE Area Provides

- **Congregational coaching, training, and support in:**
  - Evangelism
  - Stewardship
  - Faith Formation & Christian Education
  - Prayer and Spirituality
  - Administration & Leader Development
  - Mission and Outreach
  - Futuring and Transformation
  - Youth Ministries
  - Men & Women's Ministries
  - Pastoral Care
  - Pastor Care
  - Conflict management

- **Youth rallies, retreats, and leadership development**
- **Outdoor Ministry opportunities**
- **Pro-Reconciliation and Anti-Racism training and resources**
- **Search & Call for congregations (with a commitment to find pastors for congregations, not congregations for pastors!)**
- **The development of new congregations**
- **Consulting and conflict intervention**
- **Clergy coaching and training**
- **Pastoral Care for your Pastor**

The NE Area serves over ninety Disciples congregations in the twenty-seven counties of northeastern and central Missouri. We are able to minister because of your prayers and the sharing of your time, talent, testimonies, and treasure. For more information go to [www.nearea.org](http://www.nearea.org).



## The Northeast Area of the Christian Church (Disciples of Christ) of Mid-America

is here to effectively reach and serve you, our congregations,  
so you can effectively  
reach and serve your communities.

### The NE Area Provides

- **Congregational coaching, training, and support in:**
  - Evangelism
  - Stewardship
  - Faith Formation & Christian Education
  - Prayer and Spirituality
  - Administration & Leader Development
  - Mission and Outreach
  - Futuring and Transformation
  - Youth Ministries
  - Men & Women's Ministries
  - Pastoral Care
  - Pastor Care
  - Conflict management

- **Youth rallies, retreats, and leadership development**
- **Outdoor Ministry opportunities**
- **Pro-Reconciliation and Anti-Racism training and resources**
- **Search & Call for congregations (with a commitment to find pastors for congregations, not congregations for pastors!)**
- **The development of new congregations**
- **Consulting and conflict intervention**
- **Clergy coaching and training**
- **Pastoral Care for your Pastor**

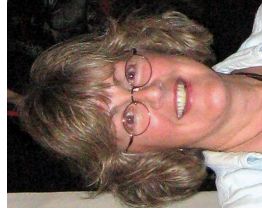
The NE Area serves over ninety Disciples congregations in the twenty-seven counties of northeastern and central Missouri. We are able to minister because of your prayers and the sharing of your time, talent, testimonies, and treasure. For more information go to [www.nearea.org](http://www.nearea.org).



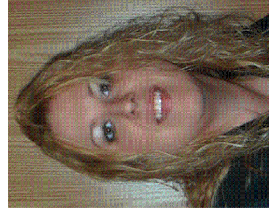
# Northeast Area Ministry Staff



The Rev. Dr. Kris Tenny-Brittian serves as the NE Area Minister. She has served urban, suburban, and rural churches in Georgia, Kansas, and Washington. She has experience as a church administrative assistant; solo, associate, and senior minister; church planter; and Associate Regional Minister. In addition to evangelism, her heart is to equip, empower, and encourage congregations and pastors to be all God has created them to be.



The Rev. Martha Jolly serves as the Minister of Outdoor and Youth Ministries for the NE Area and is the "long-timer" on our staff. Martha brings with her a wealth of training and experience in outdoor youth ministry and is responsible for coordinating our summer outdoor programs, as well as youth events throughout the year. Martha continues to ensure effective, safe, grounded, enjoyable, life-giving and changing experiences for our young people.

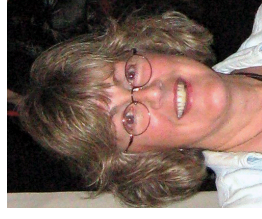


Leslie Robb serves as the NE Area Administrator. She brings experience from various non-profit and human service organizations and her education at the University of Missouri-Columbia, where she received her Bachelor's and Master's degrees. She has grown up in a Disciple's congregation and brings those values to work for the NE Area.

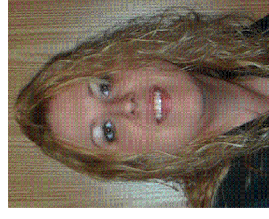
# Northeast Area Ministry Staff



The Rev. Dr. Kris Tenny-Brittian serves as the NE Area Minister. She has served urban, suburban, and rural churches in Georgia, Kansas, and Washington. She has experience as a church administrative assistant; solo, associate, and senior minister; church planter; and Associate Regional Minister. In addition to evangelism, her heart is to equip, empower, and encourage congregations and pastors to be all God has created them to be.



The Rev. Martha Jolly serves as the Minister of Outdoor and Youth Ministries for the NE Area and is the "long-timer" on our staff. Martha brings with her a wealth of training and experience in outdoor youth ministry and is responsible for coordinating our summer outdoor programs, as well as youth events throughout the year. Martha continues to ensure effective, safe, grounded, enjoyable, life-giving and changing experiences for our young people.



Leslie Robb serves as the NE Area Administrator. She brings experience from various non-profit and human service organizations and her education at the University of Missouri-Columbia, where she received her Bachelor's and Master's degrees. She has grown up in a Disciple's congregation and brings those values to work for the NE Area.

The Northeast Area of the

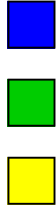
Christian Church (Disciples of Christ) of Mid-America

2700 E. Nifong Boulevard • PO Box 10230 • Columbia, MO 65205  
573.442.5815 • [www.NEArea.org](http://www.NEArea.org)

The Northeast Area of the

Christian Church (Disciples of Christ) of Mid-America

2700 E. Nifong Boulevard • PO Box 10230 • Columbia, MO 65205  
573.442.5815 • [www.NEArea.org](http://www.NEArea.org)



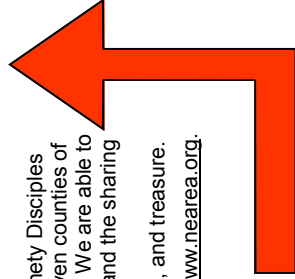
## The Northeast Area of the Christian Church (Disciples of Christ) of Mid- America

We are here to effectively reach and serve you, our congregations, so you can effectively reach and serve your communities.

### The NE Area Provides

- Congregational coaching, training, and support
- Youth rallies, retreats, and leadership development
- Outdoor Ministry opportunities
- Pro-Reconciliation and Anti-Racism training and resources
- Search & Call for congregations (with a commitment to find pastors for congregations, not congregations for pastors!)
- The development of new congregations
- Consulting and conflict intervention
- Pastoral Care for your Pastor
- Clergy coaching and training

The NE Area serves over ninety Disciples congregations in the twenty-seven counties of northeastern and central Missouri. We are able to minister because of your prayers and the sharing of your time, talent, testimonies, and treasure. For more information go to [www.nearea.org](http://www.nearea.org).



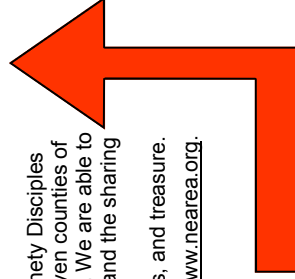
## The Northeast Area of the Christian Church (Disciples of Christ) of Mid- America

We are here to effectively reach and serve you, our congregations, so you can effectively reach and serve your communities.

### The NE Area Provides

- Congregational coaching, training, and support
- Youth rallies, retreats, and leadership development
- Outdoor Ministry opportunities
- Pro-Reconciliation and Anti-Racism training and resources
- Search & Call for congregations (with a commitment to find pastors for congregations, not congregations for pastors!)
- The development of new congregations
- Consulting and conflict intervention
- Pastoral Care for your Pastor
- Clergy coaching and training

The NE Area serves over ninety Disciples congregations in the twenty-seven counties of northeastern and central Missouri. We are able to minister because of your prayers and the sharing of your time, talent, testimonies, and treasure. For more information go to [www.nearea.org](http://www.nearea.org).



## The Northeast Area of the Christian Church (Disciples of Christ) of Mid- America

We are here to effectively reach and serve you, our congregations, so you can effectively reach and serve your communities.

### The NE Area Provides

- Congregational coaching, training, and support
- Youth rallies, retreats, and leadership development
- Outdoor Ministry opportunities
- Pro-Reconciliation and Anti-Racism training and resources
- Search & Call for congregations (with a commitment to find pastors for congregations, not congregations for pastors!)
- The development of new congregations
- Consulting and conflict intervention
- Pastoral Care for your Pastor
- Clergy coaching and training

The NE Area serves over ninety Disciples congregations in the twenty-seven counties of northeastern and central Missouri. We are able to minister because of your prayers and the sharing of your time, talent, testimonies, and treasure. For more information go to [www.nearea.org](http://www.nearea.org).

